

TECHNICAL DETAILS

PROPERTY	TYPICAL RESULTS
Physical Appearance	White
Initial Setting Time	4.5 Hours
Final Setting Time	5 Hours
Tensile Adhesion Strength	0.85 Mpa
Compression Strength	7.2 Mpa
Flexural Strength	1.89 Mpa
Water Retentivity	99.60%
Water Absorption	0.04 Kg/m ³
Colour	White
Pot life	1.5 Hours
Coverage	0.8 – 1.0 Sqm/Kg (Depending on the finish of the wall)
Recommended Mixing	300 – 450 ml of water for per kg of Promix SkimPro

PRECAUTIONS

- Though it contains non-toxic materials, care should still be taken to avoid dust inhalation while mixing and handling. In case of contact with eyes or mouth, wash with plenty of clean water.
- Keep it in a dry place out of reach of children.
- Persons who are allergic to cement/cement products should take proper precautions before use.

STORAGE

Promix SkimPro should be stored in a dry place.

SHELF LIFE

12 months from the date of manufacturing.

MANUFACTURED & PACKAGED BY PROMIX MANUFACTURING CO. LTD.

📍 Shop No. 118, Hardware City, Nakasero
P.O Box 114654, Kampala Uganda.

☎ +256(0) 777 468467 | 704 659146

✉ operations@promixworld.com

🌐 promixworld.com

SKIMPRO

White Cement & Polymer-based Skim Coat

- ADDED HIGH PERFORMANCE POLYMERS
- WATER RESISTANT
- GIVES SMOOTH FINISH
- FOR CEMENT PLASTER, CONCRETE, GYPSUM & RE-PAINTING SURFACES
- INTERNAL & EXTERNAL USE
- COST EFFICIENT
- NO NEED FOR UNDERCOAT



SKIMPRO

White Cement & Polymer-based Skim Coat

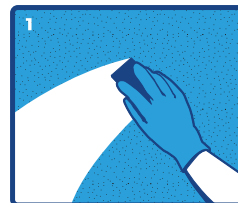
ABOUT US

Promix is Uganda's pioneer manufacturing company that makes white-cement-based premixed mortars, for building construction and renovation products. The product range is wide with impeccable quality & competitive pricing. We are committed to continually offering you the best innovative ready-to-use building materials that will make your construction projects better, faster and economical. All our materials are tested and approved by the Uganda National Bureau of Standards (UNBS). They are expertly prepared and packaged with modern high-tech machinery.

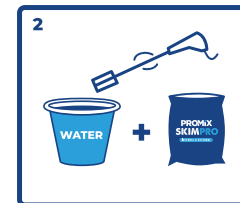
PRODUCT DESCRIPTION

Promix SkimPro is a white cement-based, water-resistant, wall skim coat that ensures a strong binding with building surfaces, a smooth finish, extensive coverage, superior refractive index, and paint-friendliness. Its unique formula has extra HP polymers, which keeps the moisture away and also avoids flaking. So, you are always assured of aesthetic interiors for your dream home for years to come.

SURFACE PREPARATION & APPLICATION DETAILS



Surface Preparation. Clean the surface with sand-paper and putty blade & remove loose particles.



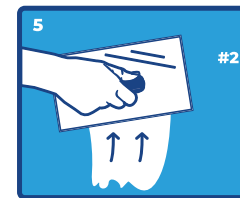
Mixing. Add 35-40% of clean water to Promix SkimPro and mix using a mechanical stirrer or by hand to make a uniform smooth paste.



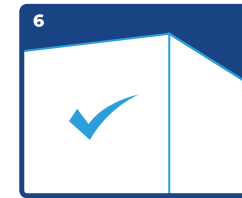
Application Step 1. Pre-wet the surface and apply first coat in a bottom to top direction.



Application Step 2. Allow the surface to dry for at least 4 hours.



Finishing. Apply a second coat of Promix SkimPro and let it dry all night.



See that the surface is completely dry & now the surface is ready for the paint of your choice.



True-Tone of Colour



Super White



Higher Coverage



Prevents Flaking



No Need for Undercoat



Longer Paint Life



Excellent Adhesion



Eco-Friendly

CREATE YOUR OWN SKIMPRO DESIGNS

